

PET PREPAREDNESS PLAN

In the event of an emergency, remain calm, informed and prepared. The calmer you are, the less stressed your pets will be!



WHAT GOES IN YOUR EMERGENCY PET BAG?

- Food, water and medicine for at least 3 days
- Medical records and information
- Collar with up-to-date ID tag, harness and leash
- Crate or pet carrier
- Familiar comfort items (toys, beds, blankets)
- Litter, litter box, and scoop
- Waste bags

TO DO CHECKLIST:

- Get pet emergency sign
- Choose an alternate caregiver
- Update microchip information and ID tags
- Assemble a pet emergency kit
- Plan for evacuation and find a pet friendly place to stay



IN CASE OF EMERGENCY
PLEASE SAVE OUR PETS

Dog Cat Bird

Other _____

EMERGENCY# _____

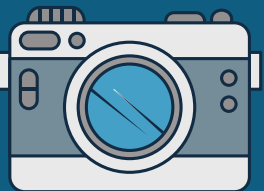
Authorized © 2018 SmartSigns Pet 4 8210

EMERGENCY PET SIGN! SAVE YOUR PETS.

In the event of an emergency, give your animals a voice with an "in case of emergency" sign.

PAWS HUMANE TIP:

Keep updated photos of all your pets!



IN NEED OF EMERGENCY ASSISTANCE?

If you are in need of assistance with food, supplies or suggestions, contact Paws Humane Society's Outreach Department at outreach@pawshumane.org.

